

Chapter 10

MOUNTING DETAILS OF CHASSIS EQUIPMENT

1. FUEL TANK
2. AIR TANK
3. EXHAUST SYSTEM

ABOUT CAD-DATA

CAD-DATA is contained on separate attachment file in this CD-ROM.

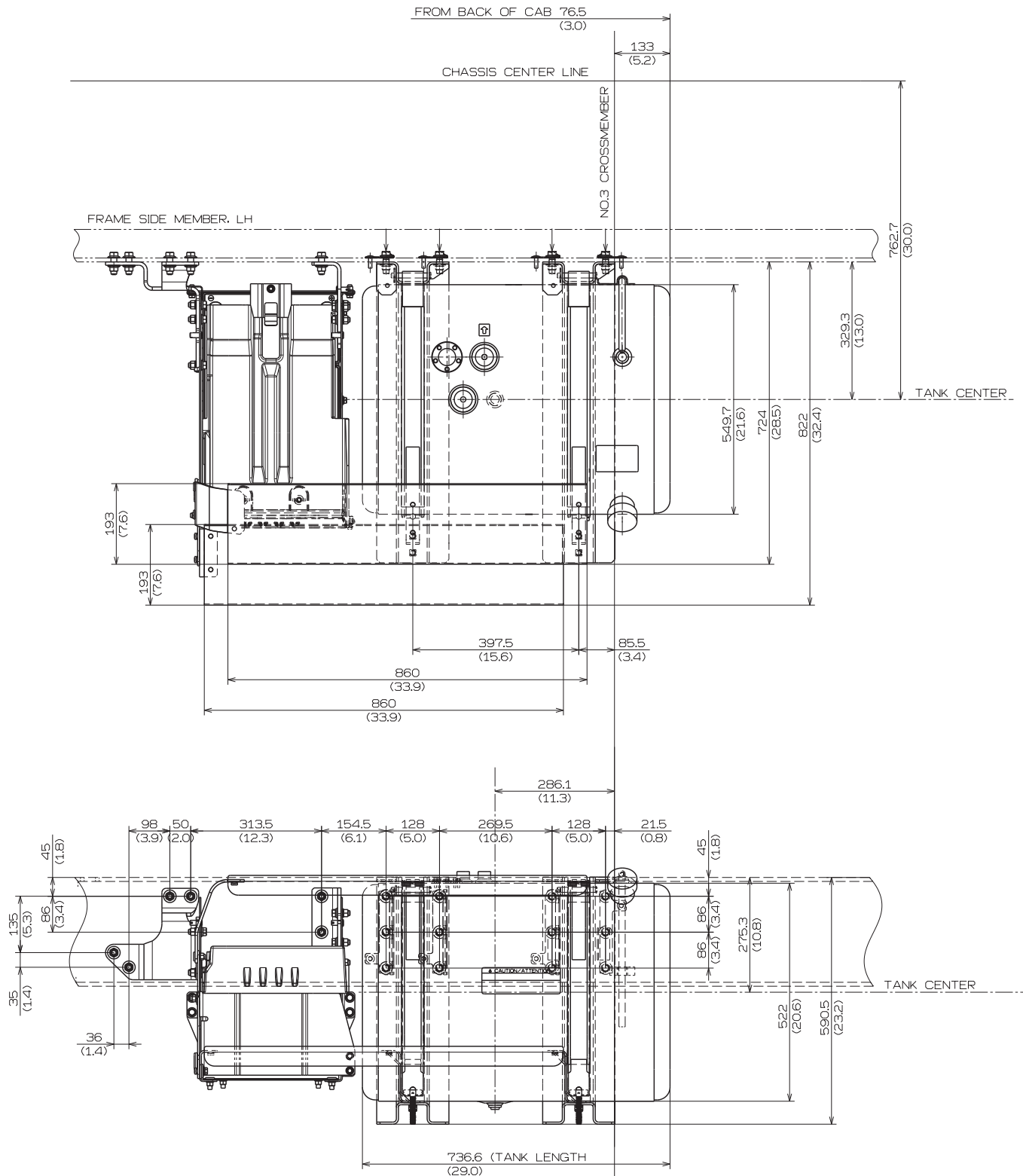
CONTENTS ; · EXHAUST SYSTEM

1. FUEL TANK

STANDARD

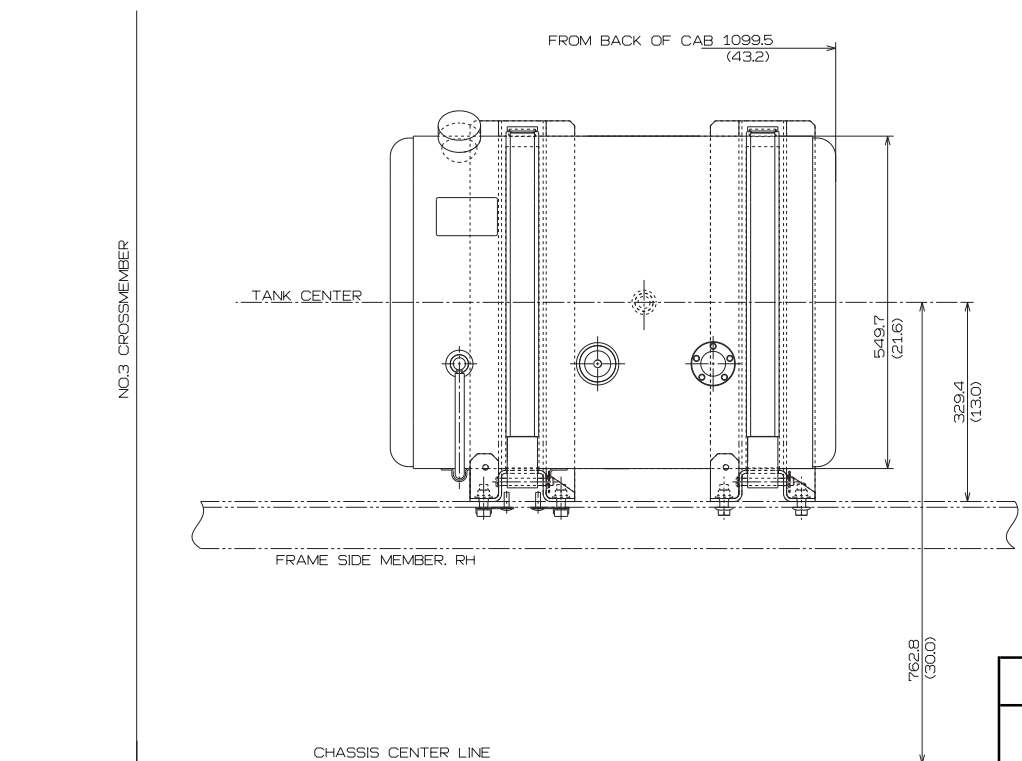
CAPACITY : 189L (50gal)

Unit : mm (in.)

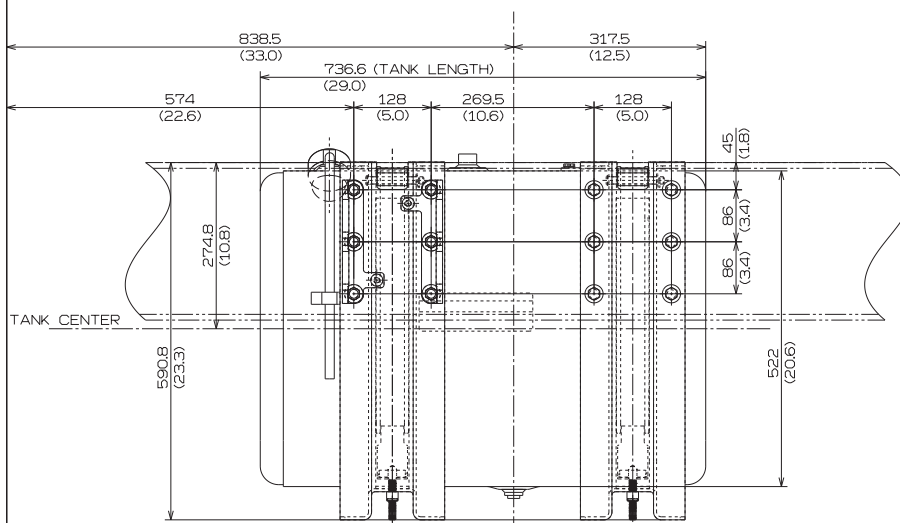


OPTION (TANK ADDITION)
CAPACITY : 189L (50gal)

Unit : mm (in.)



Cab type	A	B
Day	838.5 (33.0)	574 (22.6)
Extended	1600.5 (63.0)	1336 (52.6)

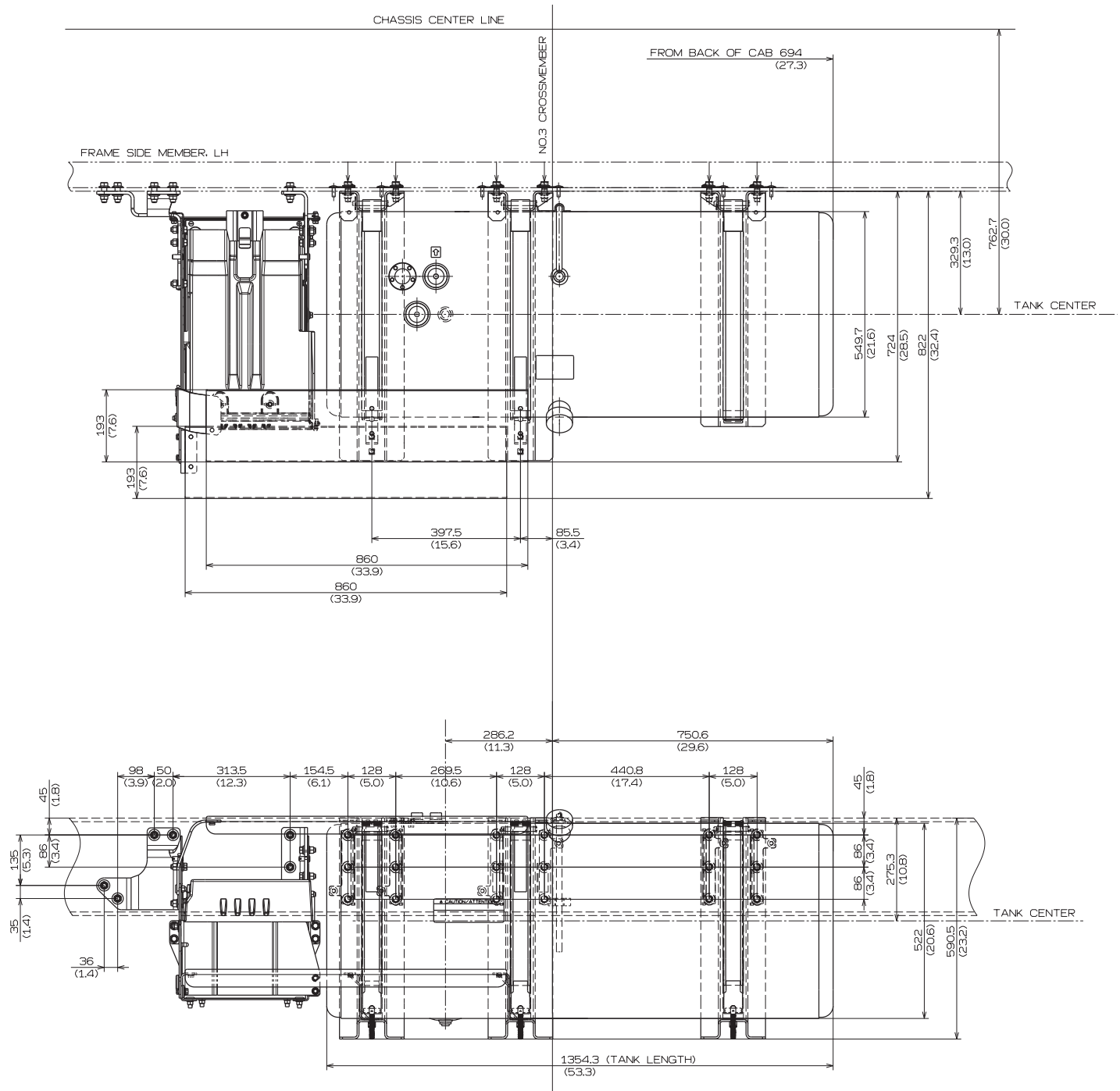


OPTION

CAPACITY : 340L (90gal)

< Day Cab and Extended Cab >

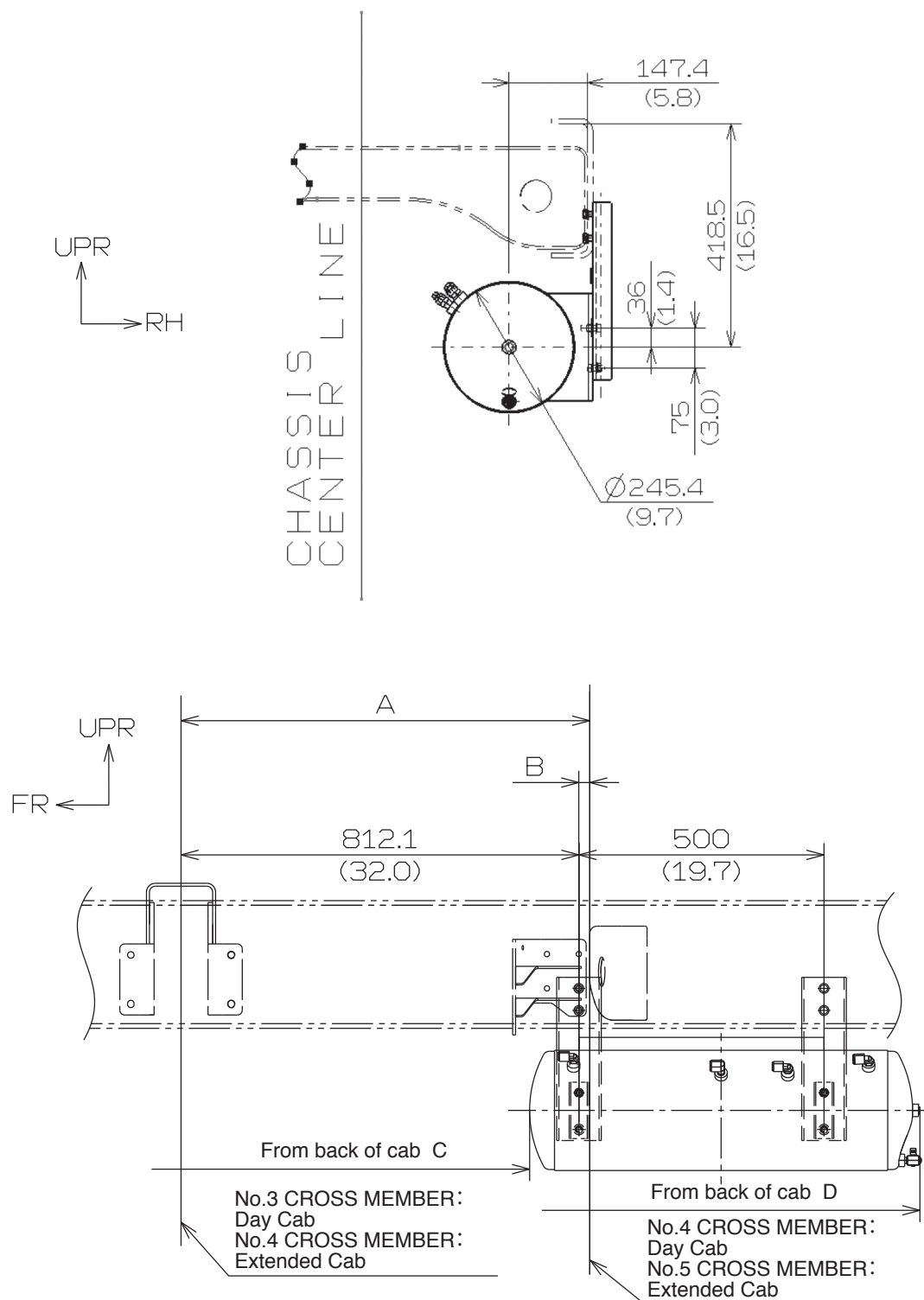
Unit : mm (in.)



2. AIR TANK

MODEL : NE8J AND NF8J

Unit : mm (in.)

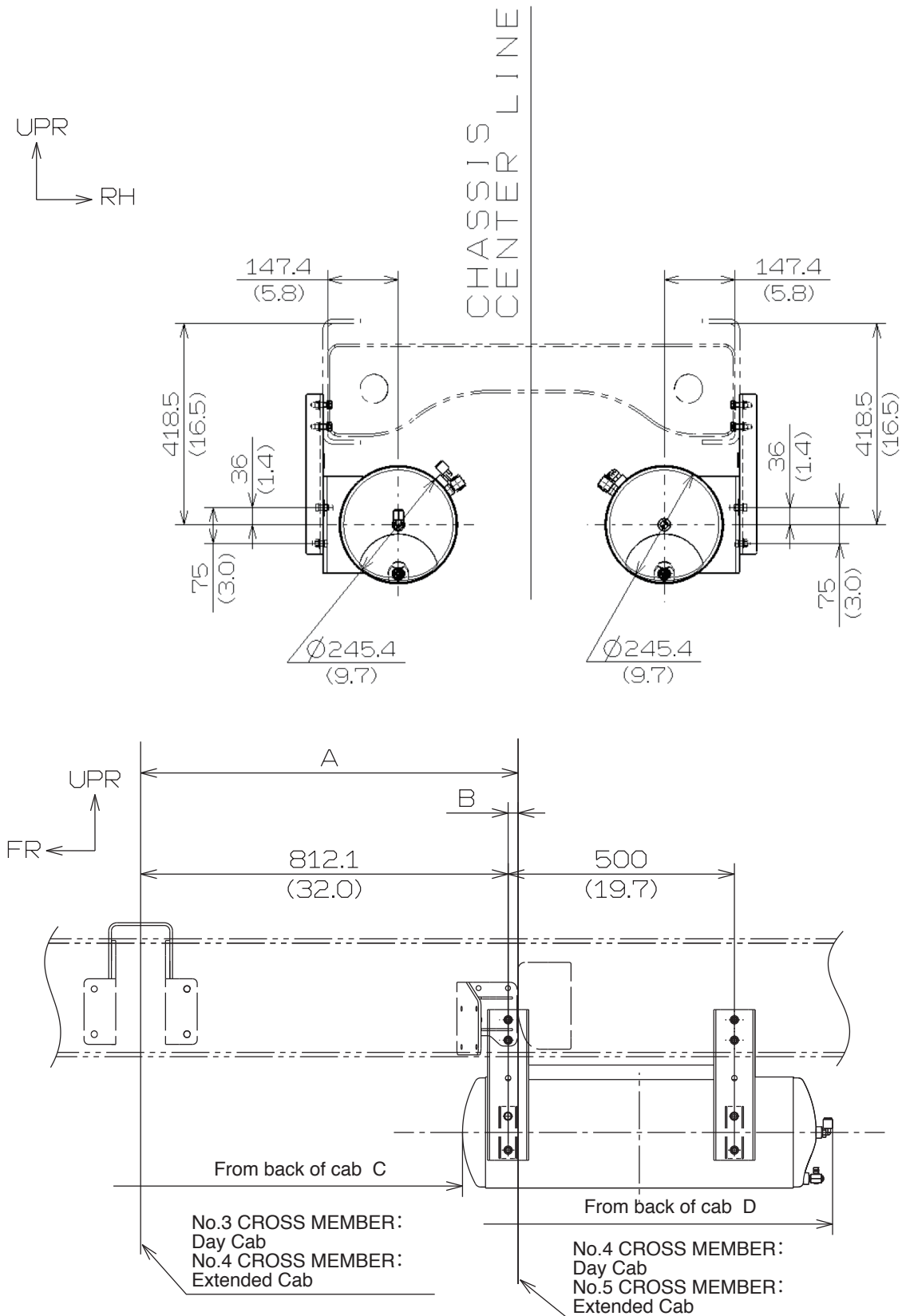


Unit : mm (in.)

Cab type	Wheelbase		A	B	C	D
Day	J, M, P, R, V	4445(175), 5207(205), 5385(212), 5512(217), 5969(235), 6883(271)	834.1(32.8)	22(0.9)	654.9 (25.8)	1448.3 (57.0)
	L, T	4750(187), 6426(253), 7645(301)	1138.9(44.8)	326.8(12.9)		
Extended	S	6147(242)	376.9(14.8)	-435.2(-17.1)		
	Y	7645(301)	1596.1(62.9)	784(30.9)		

MODEL : NJ8J, NV8J AND NH8J

Unit : mm (in.)



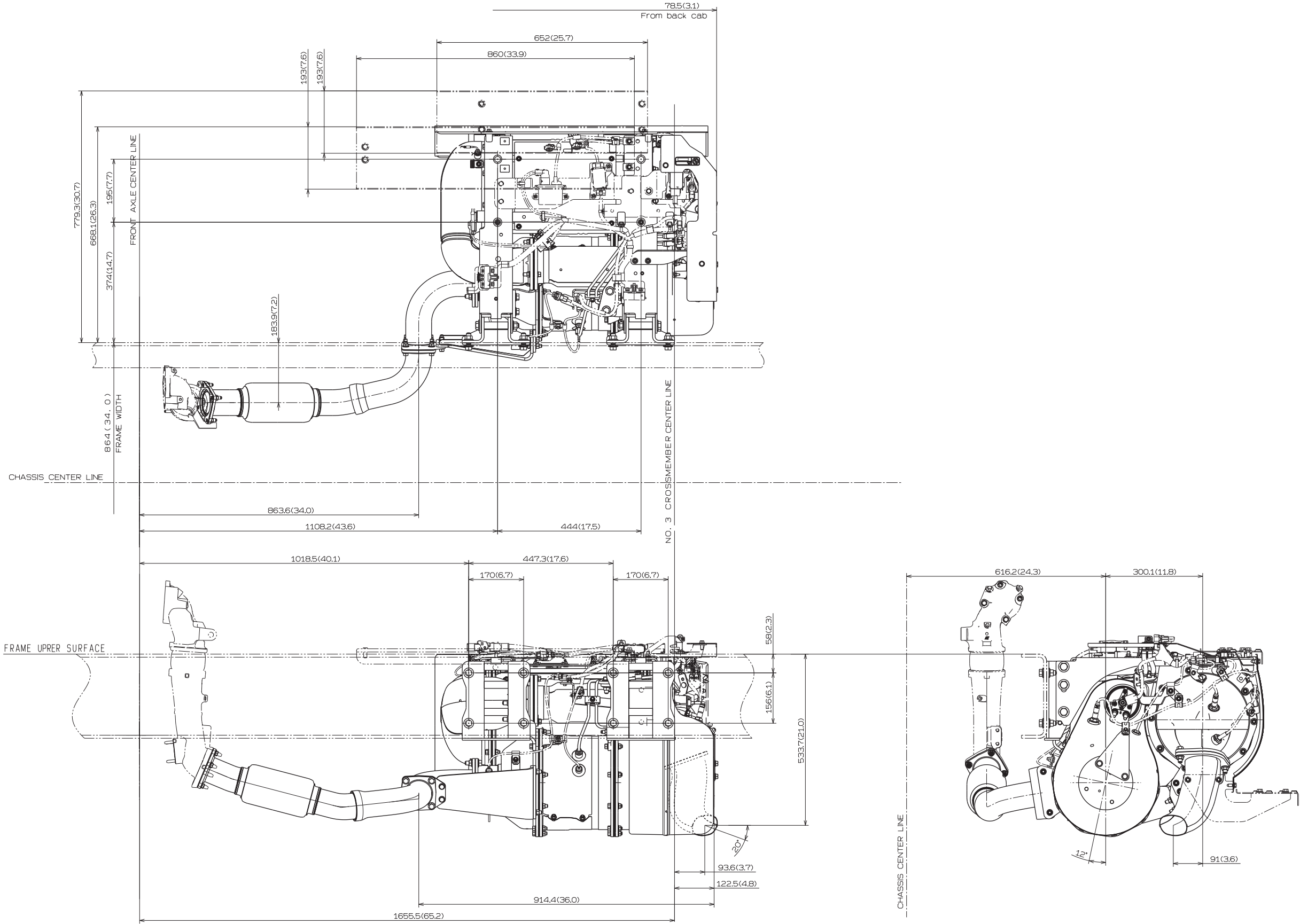
Unit : mm (in.)

Cab type	Wheelbase		A	B	C	D
Day	J, M, P, R, V	4445(175), 5207(205), 5385(212), 5512(217), 5969(235), 6883(271)	834.1(32.8)	22(0.9)	654.9 (25.8)	1476.6 (58.1)
	L, T	4750(187), 6426(253), 7645(301)	1138.9(44.8)	326.8(12.9)		
Extended	S	6147(242)	376.9(14.8)	-435.2(-17.1)		
	Y	7645(301)	1596.1(62.9)	784(30.9)		

3. EXHAUST SYSTEM

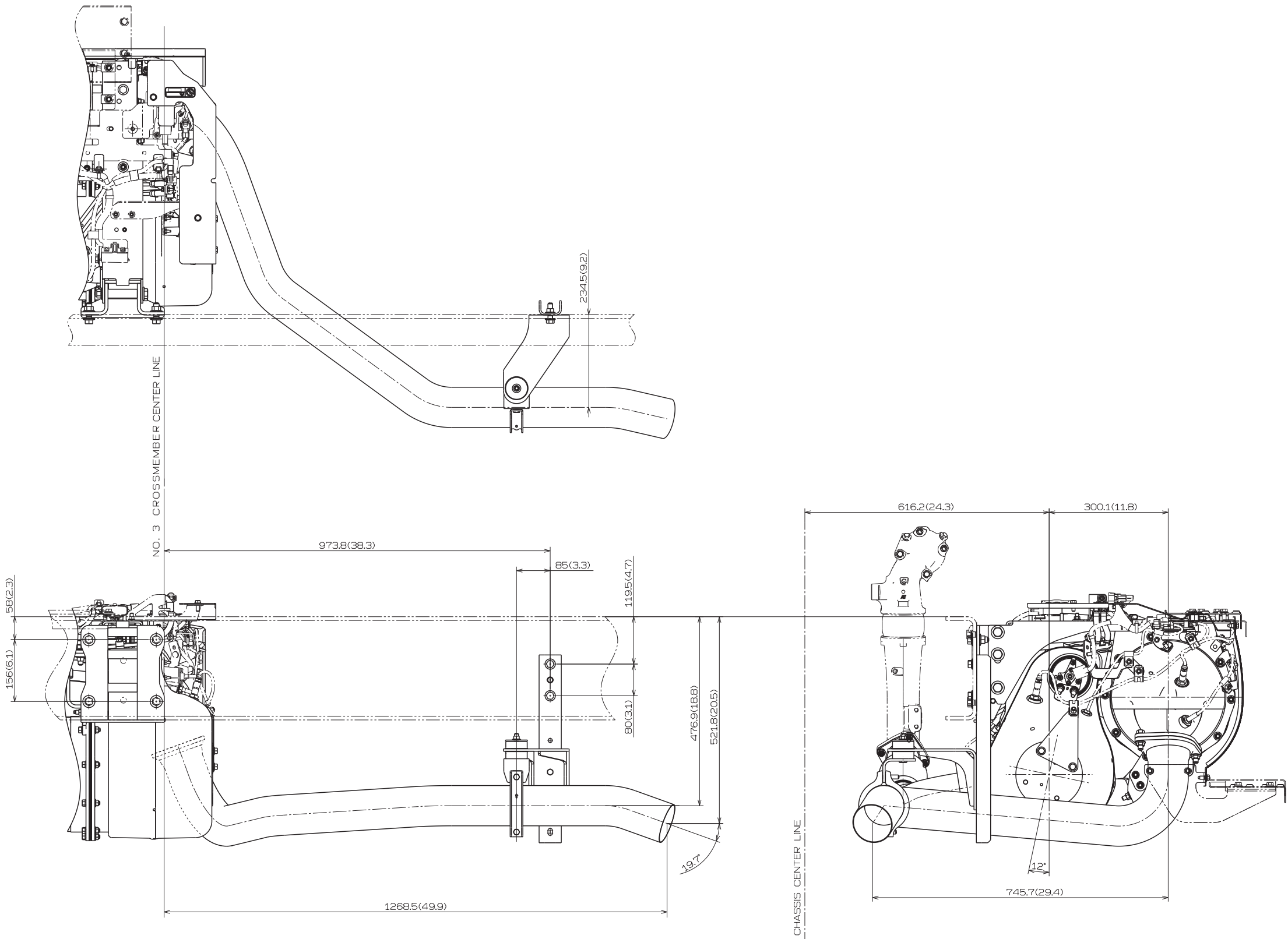
< Day Cab >

Unit : mm (in.)



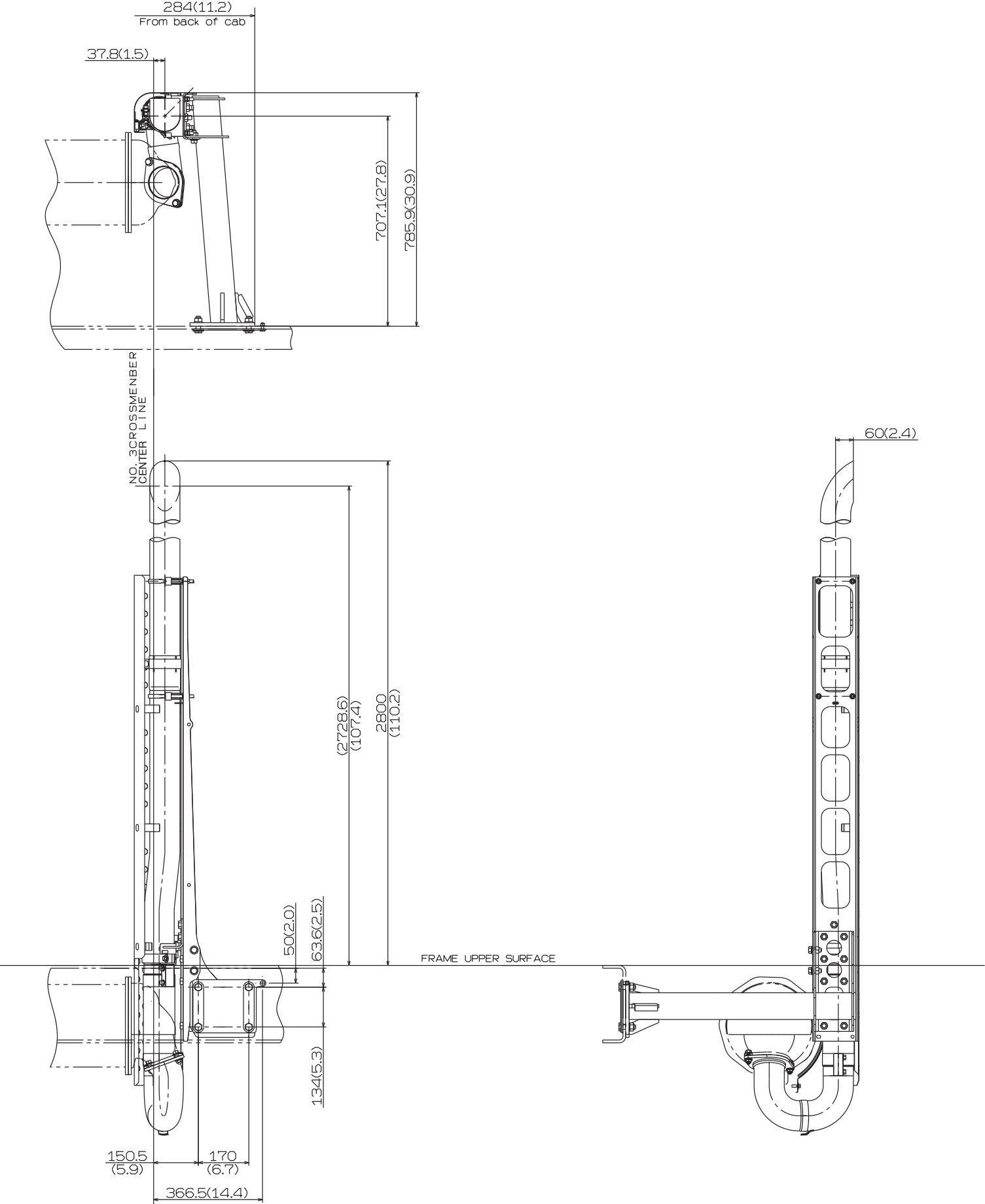
< Extended Cab >

Unit : mm (in.)



VERTICAL TAIL
< Day Cab ONLY >

Unit : mm (in.)



This figure shows only a different portion to standard specification.